

Link Ledger

Link Construction Group
2025 Edition

YOUR LINK TO BUILDING A STRONGER FUTURE



BUILDING EXCELLENCE FOR A VIBRANT FLORIDA

South Florida 5350 NW 77 Ct • Doral, FL 33166 | Central Florida: 4403 Vineland Rd • Suite B10-11 • Orlando, FL 32811



Thank you...

We want to express our gratitude to our clients, associates, and employees who make up our fantastic team, "Team Link". Together, we are the cornerstone of our company's success and one of the leading General Contractors in Florida.

Through the dedication and hard work of our team, we have created successful partnerships and have exceeded all expectations. Link Construction Group is incredibly grateful for the loyal clients who repeatedly choose our services for their new projects, and we are equally appreciative of the new clients who partner with us to bring their visions to life. These working relationships are invaluable to us.

We are committed to continuing building upon our success, long-lasting partnerships, completing successful projects, and expanding beyond our horizons. It is through hard work, trust, and loyalty that we will make it possible. At Link Construction Group, we are all family.

Guillermo "Willy" Fernandez
President

Miguel "Mickey" Cerra
Executive Vice President



2025 EDITION

On the Cover

Rendering of UniVida Healthcare
Palmetto Headquarters

Contents

Principal's Message	2
State Safety Awards	4
Completed Projects	6
Current Projects	10
Events	14
Awards & Special Recognitions	15

linkconstructiongroup.net



Lobby at Award-Winning
Parkside Memory Care
Assisted Living Facility

LINK CELEBRATES THREE STATE AWARDS FOR EXCELLENCE IN JOB SAFETY

The Link Team has consistently demonstrated that we prioritize safety above all else. Our projects, Pinecrest North Preparatory Gymnasium & Classrooms Addition and Prologis Beacon Lakes Buildings 44 and 45, each earned the USF Health Sunshine State Safety Recognition Award. This prestigious award was presented by USF SafetyFlorida, the state’s safety and health consultation program. This marks the third, fourth, and fifth time Link has received this highly esteemed award.

Our team worked collaboratively to foster a positive health and safety culture while maintaining current training, certification, and safety procedure documentation. The Sunshine State Safety Recognition Award honors Florida’s employers and employees across all industries who actively and routinely engage in job safety. Link will never relent in our pursuit of safety excellence, and we strive to continue to be awarded the top prize in recognition.



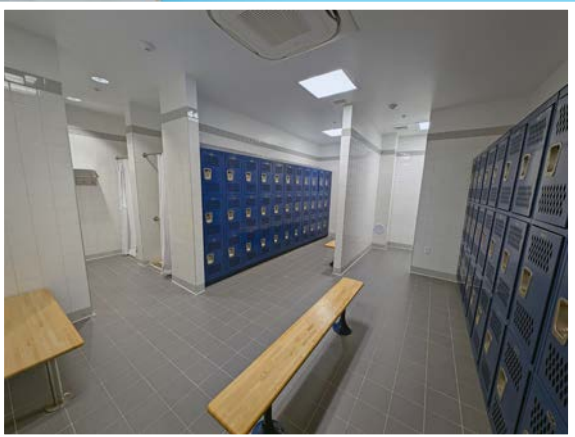
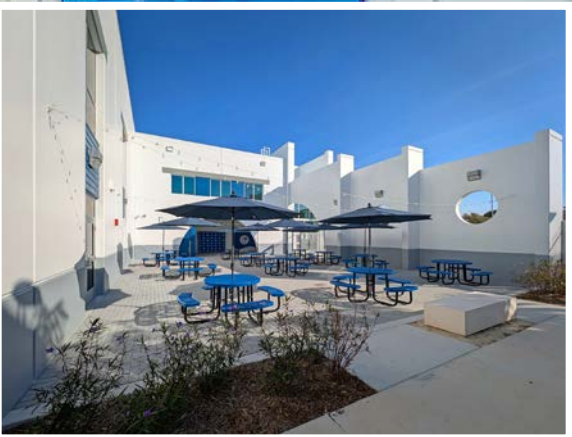
COMPLETED PROJECTS

Pinecrest North Preparatory Gymnasium & Classrooms Addition

Miami, FL

Architect: Civica Architecture

Pinecrest North Preparatory's addition is part of our ongoing partnership with Academica, the Construction Management Team, and Civica Architecture, marking this our third collaboration. This latest expansion includes ten classrooms, a science lab, a robotics lab, two locker rooms, an athletic training room, a new outdoor playing court, and a state-of-the-art indoor basketball court and gymnasium with a concession stand and a student courtyard. This project was awarded the prestigious USF Health Sunshine Safety Recognition Award.

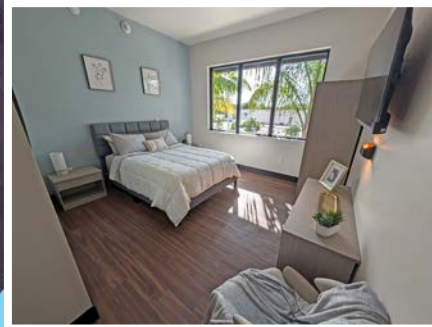
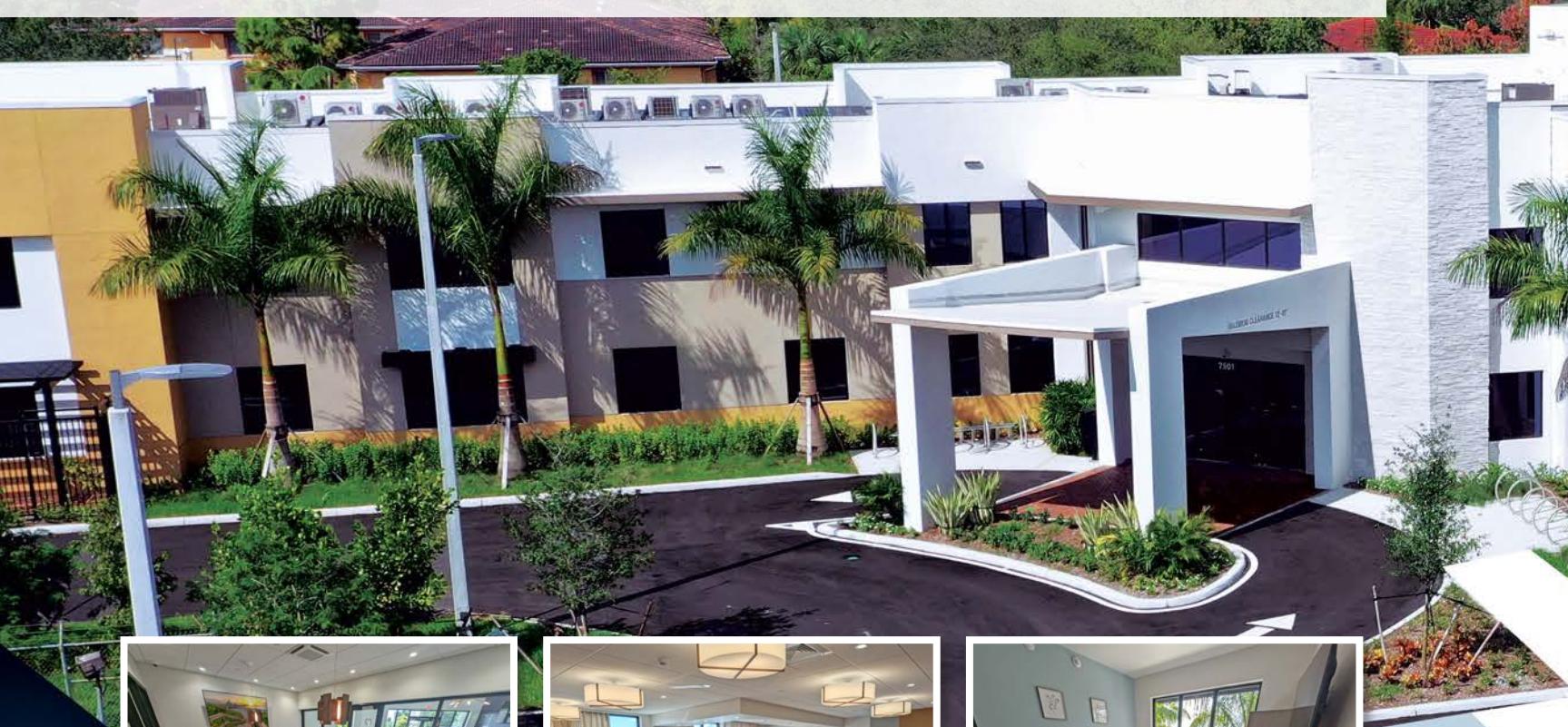


COMPLETED PROJECTS

Parkside Memory Care Assisted Living Facility

Tamarac, FL
Architect: Cabrera Ramos Architects

Parkside Memory Care Assisted Living Facility is a new state-of-the-art facility spanning 45,923 SF, offering personalized senior living. The facility consists of 70 private rooms with their own bathroom and provides activity studios, meeting rooms, a beauty parlor, a therapy room, and a high-end kitchen and dining hall with a warming kitchen for its occupants. The exterior is beautifully landscaped and features terraces and a main entrance with a porte-cochère. Parkside Memory Care Assisted Living Facility has been honored with the Excellence in Construction Eagle Award from the Associated Builders and Contractors- Florida East Coast Chapter.



Prologis Beacon Lakes Buildings 44 & 45

Sweetwater, FL
Architect: Arcadis Professional Services

Prologis Beacon Lakes Buildings 44 and 45 are two warehouse facilities constructed simultaneously as part of our extensive collaboration with Prologis and Arcadis Professional Services. Each building spans 164,435 SF and features a 36-foot height clearance. Both structures were built using tilt-up concrete wall panels, steel joists and deck, and a single-ply TPO roofing system. The warehouse floors are treated with a surface densifier, and the buildings are equipped with ESFR fire sprinkler systems. Additionally, the parking areas include multiple EV-ready stalls, with several electric vehicle chargers installed upon completion. These two facilities were awarded the prestigious USF Health Sunshine Safety Recognition Award.



Prologis Miami International Tradeport Building 7

Medley, FL
Architect: Arcadis Professional Services

The Prologis Miami International Tradeport Building 7 project involved the demolition and reconstruction of a spec shell warehouse, including the demolition of three warehouse offices and an overhead steel gantry crane, as well as the removal of the entire interior slab. New windows, storefronts, and loading dock doors were added, and openings at both the west and east ends of the building were filled in. Additionally, two spec offices were constructed in the new area to prepare the building for potential new tenants

USF Fabrication Building & Parking Garage

Hialeah, FL
Architect: Arcadis Professional Services
Owner's Representative: Sharpe Project Development

This project is a 48,800 SF steel fabrication building for USF Fabrication, standing 40 feet tall. The facility includes two levels dedicated to maintenance, offices, conference rooms, break rooms, restrooms, lockers, and showers, with a four-story parking garage measuring 19,518 SF, which provides approximately 170 parking spaces.



CURRENT PROJECTS



UniVida Healthcare
Palmetto Headquarters
Miami, FL
Architect: Modis Architects

Univida Medical Center’s Palmetto Headquarters is a three-story, 60,376 SF facility facing the Palmetto Expressway. It includes offices, an outpatient clinic, an atrium entrance, exam rooms, conference rooms, an employee lounge, an executive kitchen, and a gym with locker rooms and showers. The exterior will offer lush landscaping and 201 parking spaces.



St. Thomas University
New Dormitory & Bowling Alley
Miami Gardens, FL
Architect: MKC Architects

St. Thomas University’s new dormitory and bowling alley is Link’s fourth project on campus and the third in collaboration with University Housing Solutions. The site features a five-level student dorm building in an I-shaped footprint. The ground floor will include a lobby, community hub, lounge, utility rooms, double bedrooms, amenities, a bowling alley, a restaurant, and back-of-house facilities. Levels two to five will comprise of double and single bedrooms, and community lounges. Students will be moving in to their new home later this summer.



Stirling Logistics Center
Hollywood, FL
Architect: AR-Architecture LLC

The Clarion–Cadence Partners redevelopment site is clearly under way and nearing its completion in Hollywood, Florida. The building spans 99,000 SF of Class A industrial space over the 7-acre site. The building will boast a 36-foot clear height and will be equipped with 30 dock roll-up dock doors and concrete ramps.



Prologis AIPO T34 Buildings 100 & 200
Orlando, FL
Architect: C4 Architecture

AIPO T34 Buildings 100 & 200 is our tandem-build project for Prologis in Orlando. These two warehouse facilities are tilt-up structures that include tenant improvement build-outs for each building. Building 100 will be 136,527 SF, and Building 200 will be 109,446 SF and sit on a 14-acre site.



Longpoint 27 Cold Storage Warehouse
Allapattah, FL
Architect: Arcadis Professional Services

Longpoint 27 is a 107,632 SF, state-of-the-art, Class A, cold storage warehouse, in Allapattah, FL. This facility is set to address the growing logistical and infrastructure needs for local businesses that depend on refrigeration. Notable features of the facility include cutting-edge, high-efficiency refrigeration system provisions, in-slab glycol system, 14’ dock height doors, two ramps, 36’ ft clear ceilings, a private 120 ft truck court, and provisions for two 2,700 SF spec offices. The space also has the possibility of being divided to accommodate two tenants, each with 53,816 SF of dedicated space.

CURRENT PROJECTS



Jet Aviation OPF
Opa-Locka, FL
Architect: Mead & Hunt

Jet Aviation, a subsidiary of General Dynamics Corp, commissioned Link to build a state-of-the-art private aircraft terminal and FBO at the West Side of the Miami-Opa Locka Executive Airport. The first phase of the 27-acre, next-level facility is well underway and includes two airfield taxiway connections, a 508,000 SF FBO aircraft ramp, and a 30,000-gallon fuel farm. Phase 2 has also commenced and it includes the 8,400 SF terminal fixed base operators, 4,600 SF CBP – Customs Border Protection office, and a 43,500 SF aircraft hangar and office support space.



Bauducco Foods Zephyrhills
Zephyrhills, FL
Architect: Walker Design

The Bauducco Foods production and distribution facility at the Zephyrhills, FL Airport Industrial Park recently broke ground on the 72-acre multiphase project. Phase one will include the project’s infrastructure and the construction of the 156,410 SF pre-engineered metal building for the food production warehouse distribution and office operations. This is Link’s second project for the Bauducco family that will definitely mark a new chapter in Zephyrhills, FL.



Pinecrest Glades Academy Phase IV
Miami, FL
Architect: CIVICA Architecture

Link is excited to return to Pinecrest Glades Academy for their 4th Phase. This new addition will be a three-story building, spanning 43,143 SF and constructed with tilt-up concrete. It will feature an indoor basketball gymnasium complete with locker rooms and a concession stand, a performance stage with 225 theater seats, as well as specialized laboratories for robotics and gaming. Additionally, there will be individual studios for art, drama, dance, and music, along with an outdoor terrace. Previously, Link Construction Group completed Phase III for Pinecrest Glades Academy.



Gateway Logistics at 429 Building 400
Kissimmee, FL
Architect: C4 Architecture

Gateway Logistics at 429, part of Bridge Logistics Properties, has begun Phase 1 of a seven-building project that will encompass a total of 1.395 million SF. This state-of-the-art, 130-acre, Class A logistical industrial park is located in the Osceola County Submarket. Phase 1 will involve the development of the overall site infrastructure and the construction of Building 400, which spans 220,817 SF. This facility will feature 70 roll-up dock doors, a 60-foot speed bay, 60-foot column spacing, and a 32-foot clear height. Additionally, it will include a 130-foot concrete truck court and a parking area that accommodates 240 vehicles.



SkyBridge Miami
Opa-Locka, FL
Architect: Schenkel Schultz Architecture

Link has broken ground on the Skybridge Miami project that will include the construction of 5 pre-engineered metal building aircraft hangars on the east side of Miami-Opa Locka Executive Airport. The project sits on 24 acres of prime land and will total 227,000 SF of aircraft hangar space along with office support spaces. The project also will include extensive water & sewer, storm drainage, fire lines, and infrastructure work for paving the asphalt taxiway space.

EVENTS



CIASF Annual Industrial Event and Trade Show



Longpoint 27 Groundbreaking Ceremony



ABC East Coast FL Spring GC Showcase



Cinco de Mayo Lunch



Prologis Safety Appreciation Day Beacon Lakes Bldgs 44 & 45



Link Annual Fishing Challenge



Link USA Freedom Lunch



UniVida Palmetto HQ Groundbreaking Ceremony



Sunshine State Safety Award Pinecrest North Preparatory



St. Thomas University Phase III Topping Out Ceremony



ABC Central Florida 2025 Construction Expo



Link Wears Pink Day Breast Cancer Awareness



ABC East Coast EIC Awards



St. Thomas University Annual Stone Crab Dinner



Link's Spooky Halloween Lunch



Sunshine State Safety Award Beacon Lakes Bldgs 44 & 45



Prologis Safety Awareness Day AIPO T34



Jet Aviation OPF Groundbreaking Ceremony



Link's End of Year Luncheon



Ugly Sweater & Toy Drive Day



USF Fabrication Building and Parking Garage Topping Out



Pinecrest Glades Academy Phase IV Groundbreaking



Pinecrest North Preparatory Phase III Grand Opening



St. Thomas University Fore the Love of Education



FIU Spring 2025 Career Expo



Link's Mardi Gras Lunch



SFAGC Build Florida Awards



CASF's 15th Annual Clayshoot Tournament



ABC Central Florida's GC Connect



Bauducco Food Zephyrhills Groundbreaking Ceremony

AWARDS & Special Recognitions



SFAGC Build Florida Awards

- Miami Association of Realtors Global Headquarters
- NW Dade Logistics Center Buildings 1 & 2
- Prologis Airport Center 5



ABC East Coast Excellence In Construction

- Parkside Memory Care Assisted Living Facility
- Seneca Commerce Center Buildings 2 & 3



South Florida Business Journal

- Top Hispanic Owned Business in South Florida Ranked #11
- Top General Contractors & Construction Companies in South Florida Ranked #16
- Top Private Companies in South Florida Ranked #46



University of South Florida Health Sunshine State Safety Recognition Award

- Pinecrest North Preparatory Gymnasium & Classrooms Addition
- Prologis Beacon Lakes Building 44
- Prologis Beacon Lakes Building 45



U.S. Green Building Council

- Miami Association of Realtors Global Headquarters - LEED Gold





Link Construction Group was founded on April 16, 2001, by Guillermo “Willy” Fernandez, President, and Miguel “Mickey” Cerra, Executive Vice President and today, 24 years later, we continue to strive to be one of Florida’s leading and growing commercial general contractors. Link provides General Contracting, Construction Management, Preconstruction, CM@ Risk, Design-Build, BIM, and other construction services to the Central and South Florida markets. Willy and Mickey’s extensive experience, work ethic, and hard work set the pace and example for its employees providing unparalleled client service and dedication to each project.



Guillermo “Willy” Fernandez
President



Miguel “Mickey” Cerra
Executive Vice President